



RHS South West in Bloom Autumn Newsletter 2021



Important Dates for 2022

Regional Judging	Friday 1st July to Friday 29th July
IYN Assessments	Friday 1st July to Friday 29th July
Pride in Park Judging	June 2022 to December 2022
Spring Seminar	Thursday 24th March 2022 at Beer
Presentation	Thursday October 13th 2022 Haselbury Mill, Near Crewkerne

Our South West in Bloom Facebook Page is also a great way for groups to showcase the work they have been doing- if your group has a facebook page, we would love for you to join ours.

<https://www.facebook.com/pages/South-West-In-Bloom/193263914018665>

Secretary. Melissa Poole
c/o 15a Moorcroft Road
Hutton, Weston super Mare
North Somerset. BS24 9RW
E Mail southwestinbloom@aol.com
Tel No 07875 849809

Editor. Terry Porter
15a Moorcroft Road
Hutton, Weston super Mare
North Somerset. BS24 9RW
E Mail taporter11@aol.com
Tel No 07989 855339

Web Site : www.southwestinbloom.org.uk

Our Outstanding Win at Chelsea 2021



GOLD Medal and Best Exhibit Trophy



The Team at Chelsea 2021



Children's Picture Competition For a Creative & Imaginative Picture.



**Oscar D, Age 9
St Kenya School,
Keynsham
Winner**

RHS South West in Bloom 2022 Schools Painting Competition The theme for 2022 is

“The Queen’s Platinum Jubilee Garden“

The age groups are as follows:

Up to 6 years old, 7 – 11 years old, 12 – 16 years old

Art should be a maximum of A3 in size. On the back of each painting, put name, age, and name of school and name of city, town or village.

Only one entry per age group, and they should be the winners of your local competition. Please note submitted works are non-returnable!

The best exhibit in each age category should be sent to:

Melissa Poole

c/o 15a Moorcroft Road, Hutton.

Weston super Mare, North Somerset. BS24 9RW

Entry Forms will be available in the Spring 2022 Newsletter.

Closing date for entries is Friday 16th July 2022.

Glendale



Children's Picture Competition
7 to 11 years Old

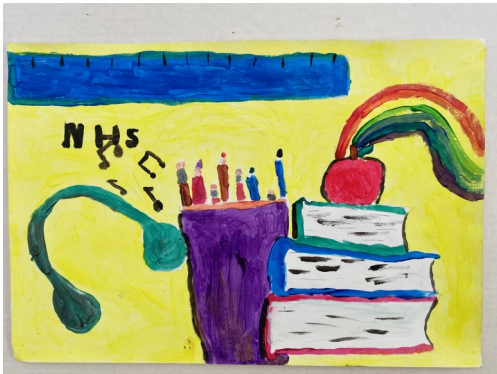


Mia G Age 8
St Just Junior School
Highly Commended

Maddie E Age 8
Plympton St Maurice
Primary School
Highly Commended



Florrie J Age 8
Highdown School, Portishead
Winner



Children's Picture Competition
12 to 15 years Old

Charlotte H, Age 14
Esteem Team, Exmouth
Winner



South West in Bloom at Chelsea 2021



Glendale crowned Grounds Maintenance Company of the year 2021



Glendale is delighted to announce that they have been crowned Grounds Maintenance Company of the year at a prestigious Pro Landscaper Business Awards 2021

Glendale had to demonstrate professionalism in everything that they do. The judges were looking for the unsung heroes of the industry who consistently undertake the crucial every-day maintenance tasks, which many take for granted, with the utmost precision and pride.

They commended Glendale for their 30+ year history and for being a well-established and reputable business in the sector. Glendale's collaboration with local communities providing over 52,000 hours of social value initiatives and the recognition that its staff are intrinsic to the success of operations were similarly commended. Glendale commits a minimum of 0.5% of total turnover to staff and technology development initiatives. A key component of staff development is its apprenticeship programme – a member of the 5% club, apprentices made up 8% of its workforce in 2021. Glendale delivers mental health training to all contract managers, how to spot symptoms and how to provide help. Driving forward continual improvement Glendale has committed to achieving net carbon neutrality by 2027 with hopes it will inspire the rest of the industry to make similar goals.--

Pro Landscaper's Jim Wilkinson, said: "Our industry is exceptional at celebrating the visual excellence of landscaping with industry awards and RHS shows that highlight how phenomenal landscapes can look, but with the Pro Landscaper Business Awards, we chose to highlight how well businesses operate their processes, staff training, health and safety records and consistently positive customer feedback."

Glendale offers an all-encompassing green space management and maintenance service at a national and local level. They are skilled designers, suppliers and distributors of grounds maintenance, tree management, landscaping, landscape architectural services, winter weather and arboriculture activities, tackling these, and various other green space management tasks, for public and private sector clients across the UK. Glendale is a national company with a local feel, led by a team who care deeply about their people and the industry, and they are dedicated to delivering the best possible service for clients across the UK.

For more information on the services available through Glendale, visit

www.glendale-services.co.uk

South West in Bloom Winners of the Children's Painting Competition 2021

This year's entries were again down with many of the schools being restricted in their activities. The theme this year was "**Learning in Lockdown**". Our thanks go to Lady Emma Fellowes for judging this year's picture competition.

Children's Picture Competition **Up to 6 years Old**

Elsbeth S, Age 6
1st Rolle Rainbows
Exmouth
Highly Commended



Elle S Age 6
St Just Junior School
Winner



Children's Picture Competition **7 to 11 years Old**

Connie M Age 8
4th Withycombe Brownies
Exmouth
Highly Commended



RHS South West in Bloom Pride in Park award.

Following the cancellation of the 2020 Parks award, we are pleased to say that the return of the 2021 Pride in Parks events have gone smoothly.

The judging started in July and will finish at the end of the year. This allows the parks to decide on the best time of year to be judged.

As in previous years the presentation for the 2021 Parks awards will be held as part of the Spring Seminar in 2022. We will be sending out Pride in Parks entry forms with the Spring newsletter as the closing date is not until Monday June 14th. For those who wish to enter in 2022.

Some of this years entries that have already been judged



Central Park, South Molton



Freedom Fields , Plymouth



Torrington Commons



Penlee Park, Penzance

Closing date for 2022 Park entries is Monday June 13th.

Glendale Win Major Contract to Provide Estate Services to leading Housing Association, Aster Group

Glendale is proud to announce that they have been awarded a 5 year contract to deliver an all-encompassing Grounds Maintenance, Tree Surgery and Estate Services contract to one of the leading housing associations in the UK.

Glendale has been appointed to maintain a high standard grounds maintenance services to communal open spaces in Aster neighbourhoods across the Southwest. Glendale has worked with Aster since 2015 delivering arboriculture services and this new contract will see services increase to include all external maintenance services including grounds maintenance, cleansing, tree surgery, pressure washing and reactive services across over 800 sites and 5 Counties.

The contract was awarded in separate lots covering different geographical areas and Glendale came out on top based on a price and quality score and awarded lots covering Cornwall, Devon, Dorset, Somerset, and Wiltshire.

The selection criteria covered 6 key areas of price, quality, technical merit, customer service, social value, and sustainability



Key to the Glendale offer is their locally employed teams, working from established offices in Exeter, Bristol, & Blandford Forum. Glendale has made a commitment to carbon reductions through electric vehicles and machinery as well as recycling all waste. Further commitments have been made towards healthy living and community involvement in nature conservation projects across Aster's portfolio. The contract will see the establishment of the Aster Academy

which will launch careers in horticulture and arboriculture for young people in the Southwest through structured training programmes and apprenticeships

Glendale offers an all-encompassing green space management service at a national and local level. They are skilled designers, suppliers and deliverers of grounds maintenance, tree management, landscaping, landscape architectural services, planning consultancy and woodland management activities, tackling these, and various other green space management tasks, for public and private sector clients across the UK. They also provide a range of winter grounds maintenance services including winter gritting and snow clearing services.

For more information visit <https://www.glendale-services.co.uk/>

Presentation at Weston super Mare.

We had a very successful presentation at Weston super Mare, with a different format than previous years.. The morning was taken up with a talk by our Chairman on the very successful garden exhibit that we built at Chelsea.



Jon's talk was followed by a very colourful and entertaining talk by James Alexander Sinclair on some of the gardens he has designed and built.



Thanks to Nigel Bloxham for the photos



Then the afternoon was the Presentation of our 2021 Awards.

There is another section of the show which may appeal to Bloom Groups who are up for a challenge! There are a series of raised beds called 'Borders' which are either 3M x3M or 1.5M x 6M planted to a theme taken from the former long running BBC radio programme 'Down Your Way'. Just as the name implies each Border should include the story of your own locality by including props or other memorabilia to enhance the planting-it could be sea nets, signs, railway memorabilia, tools from a local trade, wool etc. The plants (or props) can be sold at the end of the show or collected for future use. The Borders are ready prepared at the show, including compost making them ready for planting. All Borders are eligible to be judged for BBC Gardeners World Live Medals.'



It would be great to see a few SWIB displays, as the gauntlet has already been laid for South and South-East in Bloom entries! If anyone is interested in displaying a Border (it can be groups or individuals) please contact Lucy Tremlett at

Lucy.Tremlett@immediate.co.uk.

Emma Hearne and Adam Frost

Full details about the show can be found at:

<https://www.bbcgardenersworldlive.com/spring-fair>

Even better news, if you intend visiting there is a special discount available to all SWIB supporters and their friends and families.

Just enter the word BLOOM into the special discount code and you will receive a 15% discount if purchased before the 31st January.

If any group would like to enter a border at the show, then free tickets are included with the entry.

BBC Gardeners' World Live Spring Fair Beaulieu

Flower shows are now back on the agenda following the difficult period of the pandemic. This resulted in many shows moving their traditional time tables, and of course there are ongoing measures to ensure visitor safety by checking vaccine records and planning events to allow for social distancing.

In May 2021 a new gardening event was launched at The National Motor Museum, Beaulieu, Hants called BBC Gardeners' World Live Spring Fair. The event, held in association with Hillier Nurseries was a sell-out success and will be held annually, next year it takes place on 29th April to 1st May. Admission includes access to The National Motor Museum and its interesting gardens.



Familiar BBC Gardeners' World presenters will be there every day, and there are talks and demonstrations from the stage. Guided walks around the gardens will take place with our own expert Saul Walker from Stonelands, Dawlish, and there is an interactive allotment, designed and planted by more familiar faces- Jon and Terry! The Association of Professional Landscapers are producing four small gardens with the theme 'over the garden gate', amongst several other garden features including a showpiece garden from Hilliers. There will be

30 specialist nurseries in addition to Hilliers home grown nursery plants



Presentation of 2021 awards at Weston super Mare.



Sponsors Trophy, Best entry
Winner **Thornbury.**



Best Seaside entry. Winner **Newquay.**



Viv Verrier Trophy, Best new entry
Winner **Barnstaple**



Alf Crouch Trophy, Service to Bloom
Winner, **Sharon Darton, Exmouth.**

Joint Winners of Champion of Champions 2021



Kingsbridge



Sidmouth



**Gordon Ford Trophy, Best IYN
Jo's Upcycled Garden, Melksham**



**London & Manchester Trophy,
Contribution to the Environment
Pollinator Patches, Babbacombe**



**Indigos Go Wild, Brixham
Outstanding**



**Friends of Stoodley Knowle, Torquay
Outstanding**



**Mayflower Floral Galleon,
Plymouth Community Homes
Outstanding**



**St Mary's Close, Hutton
3rd Place in Best IYN
Outstanding**

Glendale retains Arboricultural Association Approval at Bristol



The Glendale team is delighted to announce they have retained their Approved Contractor Status with the Arboricultural Association in the Bristol area.

ARB Approved Contractor program is the only comprehensive accreditation scheme for professional tree surgery businesses in the United Kingdom.

Becoming an Approved Contractor demonstrates the ability and desire of Glendale to work to best practice, achieve higher levels of knowledge and skill, and promotes and raises the professional standards of the industry. It requires a thorough audit of our business, systems, management and teams on-site to ensure that we meet a great level of service, professionalism and quality. Independently assessed by a very experienced assessor, the audit includes a commitment to training and investment in our staff, but also continued professional development of the team.

All Glendale Arboricultural offices in the Southwest are Arboricultural Association Approved, offering industry leading quality and technical ability in all aspects of tree surgery, tree management and advice.

For all your tree management requirements call Mat Clarke (Devon & Cornwall) on 01566 772 802, James Edwards (Somerset, Bristol & Avon) on 01275 464466 or Tom Differ (Dorset & Wiltshire) on 01258 470258

For more information of Arboricultural services available through Glendale, visit <https://www.glendale-services.co.uk/services/tree-management/arboriculture-services/>



Glendale

2021 It's Your Neighbourhood

- 8 **Electrify your garden - An average petrol power tool emits 0.848 kg carbon per litre of petrol used. It's not only carbon, they emit harmful particulate and noise pollution too.**

If the 21% of UK gardeners who use power tools switched from fossil fuel to green energy electric-powered tools, it would save enough carbon equivalent to drive around the planet 29,820 times.

- 9 **Help map garden plant biodiversity - Help map UK garden plant diversity**

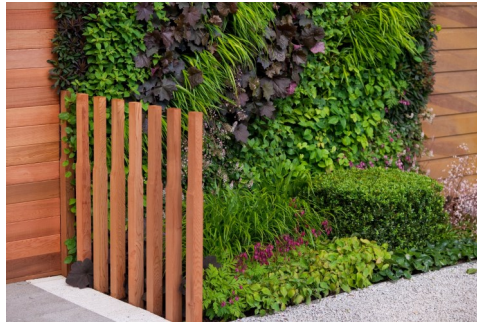
Add your garden plants to RHS My Garden online. Together we can help map UK garden plants, helping to conserve and grow this important biodiversity now and for future generations. So far we have 122,000 users who have added 2.4 million plants consisting of 77,600 different types of cultivated plants. See the RHS web site for details.

- 10 **Eat more home-grown, UK local and seasonal fruit and vegetables - Buying locally sourced and home-grown produce can save significant amounts of greenhouse gas emissions.**

Eat more home-grown UK, local and seasonal fruit and vegetables from local sources or from your own garden or allotment. Growing at home allows you to choose not to use pesticides – another plus for the planet.



Wisley Hilltop Science Centre



Green Wall

Important Message from the RHS about 2021's IYN Certificates

Please accept our sincerest apologies, a printing error meant the newly designed 2021 It's Your Neighbourhood Certificates were missing key information. The RHS will be reprinting all of the South West's IYN certificates and posting them directly to each IYN group leader. This process will take a few weeks, so please bear with us. We are very sorry for any inconvenience caused in the meantime. If you have any concerns, please contact the RHS team: communities@rhs.org.uk



Old Railway Garden, Brixham
Advancing

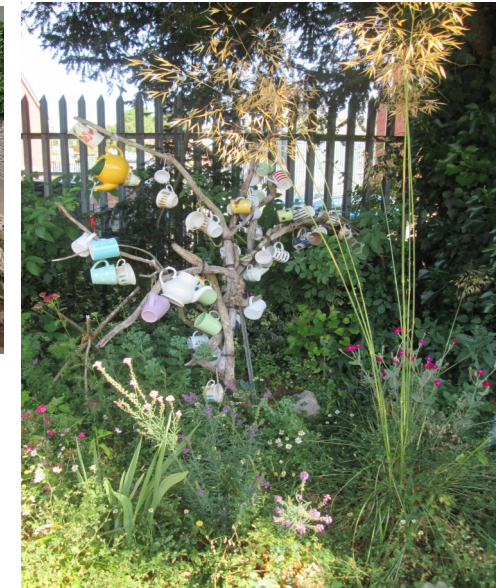


St Nicholas Church Graveyard
Radstock - Advancing



Hayle - ASDA 'Quayside 3 Dinghy's
Improving

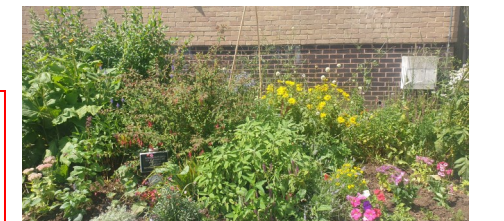
Enter your IYN in 2022
Entry Free
Closing Date: Friday 8th April
Assessing between Friday 1st
July to Friday 29th July



Station Tea Rooms, Crediton
Improving



Our Space, Torquay
Advancing



Mr Cod Landscaping, Swindon
Advancing

St George in Bloom's contribution to halting the decline of Bees, Butterflies and other Pollinating insects - Our 'Pollinator Hubs.'

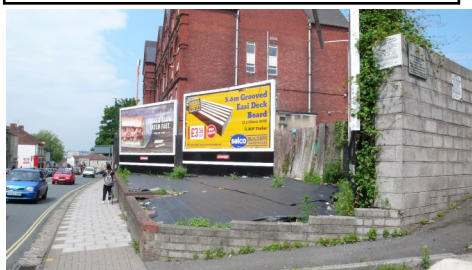
Grenville, Chairman of St George in Bloom would also love to see the development of chains of 'Pollinator hubs' throughout the United Kingdom, and particularly within urban and town settings.



With creative thought and some imaginative flair, Councils and city developers could also assist voluntary groups with this challenge. This would be a very worthwhile contribution to the environment

Two of the sites that St George in Bloom have planned, planted, and maintained as 'Pollinator Hubs.'

The Pollinator Hub created at the entrance **St George Park**. The site before and after the planting carried out by the group in 2021



The Billboards site in St George is a council owned plot of land that has advertising signs located within the area.

The Pollinator Hub created on this site has not only provided an inner city area beneficial to insects, but has also provided a great enhancement to the area



- 3 **Go peat free** - Peatlands are the world's largest carbon store on land. They provide valuable ecosystems for plants and animals and act like sponges, reducing the risk of flooding.

When we take peat for our gardens, carbon is released and habitats are damaged. Keeping peat in bogs – not bags – is a crucial part of the fight against climate change. Our planet's billions of acres of peat hold more carbon than all the world's forests combined.

- 4 **Make your own compost** - Carbon saving quantities linked to home composting (as opposed to buying bagged retail compost) are equivalent to 1.85 miles (driven by average car) saved per kg of home compost made.

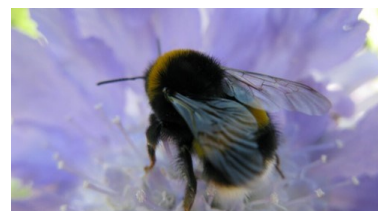
Every 1kg of homemade compost saves 0.1kg fossil carbon, which could save more than 15 - 19kg carbon, per gardener, per year.

- 5 **Pull up a paving slab** - Garden soils and perennial plantings play an important role in storing carbon.



If 30 million gardeners pulled up a paver and planted 1m² of perennial plants (either herbaceous, shrubs or trees) in their community, school, workplace or garden and allowed it to develop to maturity, depending on the plants grown this would be equivalent to heating between 86,000 to more than one million homes for a year!

- 6 **Plants for pollinators** - Pollinators need our help. Loss of habitat is one of the main reasons why we see fewer bees, butterflies and other insects visiting our gardens.



Help slow and reverse the declines in bees, butterflies, moths, hoverflies and other pollinators by growing a wide variety of plants including a mixture of native, near-native and exotic plants to support pollinator diversity.

- 7 **Grow your own bunches of flowers** - Some imported flowers have up to 10 x the carbon footprint of home or UK-grown bouquets.

Growing or buying UK-grown cut flowers can save up to 7.9kg carbon per bunch compared with buying some imported bunches.

RHS Sustainability Strategy

The RHS has launched an ambitious new science strategy to encourage every one of our nation's 30 million gardeners and the general public to create change and help mitigate the climate and biodiversity crisis.

Within the decade, we aim to become **net positive for nature and for people**, and to encourage and enable gardeners to do the same.

Net positive for nature means not just having zero impact, but actually improving biodiversity, and removing more carbon from the atmosphere than is produced by the RHS and inspiring Britain's gardening public to do the same.

Net positive for people means actively and consciously improving the wellbeing, physical, mental or social health of people through the activity of gardening.



RHS Wildlife Garden, Wisley

To achieve this we will be looking at our own operations as well as activities in the horticulture supply chain and the positive actions all gardeners can take. We want to increase our understanding of the social issues facing the industry and promote the positive physical, mental and social impacts that gardening can bring to millions of people. We will use our position in the horticultural industry and relationships with government and policymakers as an active force for good.

Activating the UK's 30 million gardeners is key and **these are our top 10 tips** for things you can do:

1 Plant a tree - Trees are brilliant at drawing down carbon from the atmosphere.

If all 30 million UK gardeners planted a medium-sized tree in their community, school, workplace or garden and nurtured it to maturity, they would store enough carbon equivalent to drive you more than 11 million times around our planet. Make sure you are choosing the right tree for the right place.

2 Water the way nature intended - Switch from mains to rains in your garden to save carbon. Make your pledge on mains2rains.uk

Use a water butt containing water that falls onto your roof instead of turning on a tap from the mains supply, or use a watering can instead of a hosepipe. So far 6.6 million litres of water have been pledged to save on the RHS mains2rains website, equivalent to taking 82,385 baths - saving enough carbon equivalent to charge 1.3 million smartphones

Presentation of Awards 2022



We have now set the Date and Venue for the 2022 presentation and we are pleased to announce that it will be at the beautiful location of

**Haselbury Mill, Near Crewkerne on
Thursday 13th October 2022**

Following the success of this years presentation format, we are at present in the process of securing an entertaining guest speaker for the morning and full details for the day will be in the Spring 2022 Newsletter, together with booking forms.



Business, Leisure, Tourism & Commercial Award

NORTH SOMERSET

Portishead	Sarah Tynan Flowers	SILVER GILT
Bleadon	Queens Arms	GOLD

WILTSHIRE

Melksham	Blenheim House Care Home	GOLD
----------	--------------------------	------

DORSET

Sherborne	The Eastbury Hotel	GOLD
-----------	--------------------	------

BRISTOL & SOUTH GLOS

Bristol	Bedminster Station Gardening Club	SILVER GILT
---------	-----------------------------------	-------------

B&NES

Bath	Milsom Place	GOLD
Freshford	The Inn at Freshford	GOLD
Kelston	The Old Crown Inn	GOLD

SOMERSET

Glastonbury	The Lion at West Pennard	SILVER GILT
Cannington	Blackmore Farm	GOLD

DEVON

Buckfastleigh	Tikka's Tea Rooms & Bistro	SILVER GILT
Buckfastleigh	Buckfast Abbey Gardens	GOLD
Plymouth	Royal William Yard	GOLD
Plymouth	MEMCO, The Flower Beds	GOLD
Barnstaple	Brend Hotels Ltd	GOLD
Barnstaple	Portmore Golf Park	GOLD

CORNWALL

Liskeard	Liskeard Traders Association	GOLD
Penzance	The North Inn, Pendeen	GOLD
Penzance	The Planted House	GOLD
Penzance	One & All(Pub)	SILVER GILT
Penzance	The Long Boat Inn	GOLD
Penzance	The Turks Head	GOLD
Penzance	The Tremeneere	GOLD
Penzance	Sainsburys	GOLD
St Just	The Commercial Inn	GOLD

Please Note :- The closing date for the Main Competition, IYN, Town Centre and Commercial. Leisure & Tourism entries is

Friday 8th April 2022.

Spring Seminar 2022

Thursday 24th March

The Mariners Hall, Fore Street, Beer EX12 3JB

10.00 a.m. to 4.00 p.m.

Programme (Provisional)

10:00 Coffee, Welcome & introductions

10:15 "Gardening for the Neuro-Disabled." A Journey

Josephine Spring

11.00 Comfort break

11.15 'Grey to Green - Making your community Bloom!' **Saul Walker**

12:30 Lunch in the Dolphin Hotel Bar Available

14.00 "It could only happen to a Bloom Judge" **Rae Beckwith**

15.00 Comfort break

15.15 **2021 Pride in Parks Awards**

15.45 Question Time & Closing Remarks

Cost £20.00 per delegate. Closing date for bookings Friday 11th March.

A booking form is enclosed with this newsletter.

We have a varied programme for the 2022 Seminar and we are very pleased to have secured three excellent speakers covering a wide range of interests.

Rae Beckwith



Rae first began Judging when he was 13 years old and has judged something every year since.. He first became involved in RHS Britain in Bloom 41 years ago and has enjoyed the involvement and friendship every year since.

He currently judges both RHS Britain in Bloom and Shows and is a member of Council for the North of England Horticultural Society and is a past Chair of the Guild of Horticultural Judges.

Speakers at the Spring Seminar 2022

Saul Walker



I was born and lived a significant proportion my life in Plymouth, Devon and became besotted with plants and gardens in my teens. After a short stint as an Archaeologist, I joined the National Trust at Antony House, nr Torpoint, as an apprentice sponsored by the live-in family, the Carew-Poles, finally working there for many years before being accepted to study and work at RBG, Kew where I fulfilled a life-long ambition and gained much experience in the world of Horticulture both within the gardens and abroad.

After my time at Kew, I took a small detour from practical gardening to join the RHS as a Show Manager, firstly at the Hampton Court Palace Flower Show and then the Chelsea Flower show, commissioning and managing exhibits, gardens, and the floral marquee (among many other duties!).

However, the pull back to my native Devon was too great, as I moved back 7 years ago and started my current employment as Head Gardener of the 12-acre private pleasure garden at Stonelands House on the outskirts of Dawlish.

I also sit on the Trustee board of the Chartered Institute of Horticulture, the Garden House, nr. Yelverton and the Devon Gardens Trust.

I am a member of the RHS Tender Plant Committee, a British Orchid Council judge and host a regular gardening podcast called Talking Heads with fellow Head Gardener Lucy Chamberlain

Josephine Spring



Josephine Spring read Nutrition at Queen Elizabeth College, University of London and did research in Government and Industry interspersed with Research Management. To update her scientific knowledge, she studied Horticulture at the University of Reading. At the Royal Hospital for Neuro-disability, London, she undertook research into horticultural therapy for Fellowship to study garden therapy for neuro-disability in Scandinavia, applied the findings, upgrading the garden in London and auditing it for effectiveness.

She is retired, assesses for South West in Bloom and promotes gardening for the disabled.

Business, Leisure, Tourism & Commercial Award

It was good to have the Business Awards return in 2021. We were pleased to have 24 entries spread across the whole region, and they were again of a very high standard. We hope many of the regulars will return in 2022.

Presentation of the awards took place in the Winter Gardens Pavilion at Weston super Mare on the 7th October 2021.

The entry fee for 2022 is still £20 per entry to help cover assessment and feedback costs. This environmental benchmarking award has much to commend itself for as a measure of quality. Judges will be looking at areas around entrances, public facilities, standard of maintenance and general appearance. As well as interesting and original floral displays, general landscaping and general maintenance of grassed areas.



**Blenheim House Care Home
Melksham - GOLD**



**The Old Crown Inn - Kelston
GOLD**



**Royal William Yard, Plymouth
GOLD**



**Buckfast Abbey Gardens
GOLD**

Entry forms are included with this Newsletter, but they can also be obtained from our Secretary Melissa or downloaded from our Website.

Closing Date for Entries: Friday 8th April 2022.

Autumn Newsletter President's Message

I had every confidence in you all, when Covid restrictions began to ease and there was a possibility we could run a competition again.

Following advice from the RHS, a SWIB competition with some sensible precautions could take place in 2021, so we went ahead.

What the judges reported back was truly uplifting. More on this later.

As you are all aware the famous Chelsea flower Show was postponed for the first time in its long history from May to September, which presented many challenges for growers. This would allow more time for Covid restrictions to settle and restrict the number of people visiting. Jon had already secured an entry for SWIB to promote the South West. (see Spring newsletter)

Along with Terry and Jon, Stonebarn Landscapes Ltd, our own members, and Lynette Talbot and the Sidmouth Bloomers the fantastic stand was built, including Elmer the elephant and friends in 3d carpet bedding. Much publicity was gained with TV Radio and press interviews.



The reward for the team, winning The Best Exhibit in the Great Pavilion, along with The RHS Chelsea Plant of the Year, *Cercis canadensis* Eternal Flame, introduced by Suttons exhibited by us as one of our sponsors of the event.

Well done to you all.

October arrived with the long awaited presentation of awards at Weston super Mare.

On October 6th the Mayor of Weston super Mare Cllr James Clayton hosted a Civic reception in the Royal Hotel for invited guests with refreshments and entertainment, that was greatly appreciated by all. Then my committee, judges etc held our annual dinner, which gave everyone the chance to meet up in a relaxed atmosphere.



Chairman's Report

Congratulations and many thanks to everyone in South West in Bloom for an outstanding contribution towards maintaining and improving the environment, floral features and the lives in communities throughout the region.

It's Your Neighbourhood has maintained reasonable levels and there are many examples of where all your efforts have had a real impact. Business involvement in what we do has increased and the BID projects were a highlight in 2021.

The future is bright, localism, food production and climate change concerns are areas for us all to address. In this regard I am pleased to note that the RHS is continuing to invest in communities and are reviewing its staff teams, and initiatives to recognise what you all do in the widest sense.

Our presentation was a success according to feedback received and postings on local media and digital.

Digital provides a massive opportunity whereby we can communicate our values, aspirations and outcomes to full extent.

Chelsea was a profile rousing event for SWIB for a second time and to everyone involved please accept my most sincere thanks for your support.

As to the future, I feel that we have a wonderful opportunity to promote change through our National and Regional projects. We can address diversity, the environment but not forget the value of plants planting and their effect on people in our brilliant region.

Many thanks, Happy Christmas and good luck in 2022.

Jon Wheatley.

Chairman

4 **The pandemic isn't over.** None of us know what the winter will bring, and it seems only sensible to continue practising social distancing where possible. By reducing the need for maintenance visits, Amberol's self-watering planters help to ensure that horticultural staff and volunteers remain safely socially distanced. Our range of [Tiered Planters](#), which includes fountain and beehive containers, create maximum effect for minimal effort as well as reducing potential points of contact. Amberol's [Parade](#) and [Promenade Planters](#) have also proven popular as attractive floral barriers in public places as part of social distancing measures. And, while we all hope such moves won't be needed again, it's advisable to be prepared for all eventualities

5 **Sources of funding.** There are often alternative ways of funding planting purchases such as through planter sponsorship. Many In Bloom groups raise money through sponsorship of their floral containers from local businesses. In fact, we have produced a [useful guide](#) with tips and advice on seeking sponsorship specifically for Britain in Bloom groups. Copies are available free on request by emailing sales@amberol.co.uk. Alternatively, why not have a go at entering the Amberol photo competition? Running quarterly throughout the year, the winning photo wins £200 worth of Amberol vouchers to help boost their horticultural coffers. Just submit your entry via the [online form](#) – there's no deadline so you can submit your images anytime.



How can we help? If you would like to discuss your self-watering planter or litter bin needs or find out more about how we could help your group, please call 01773 830 930, visit www.amberol.co.uk, email sales@amberol.co.uk.



October the 7th came with us meeting up in the beautiful Winter Gardens Pavilion. Around 260 delegates attended, it was so nice after all this time to meet up with you all, to see smiley faces awaiting to hear the results was a joy.

The session started with a letter received from our patron Lady Emma Fellowes, to say sadly she would not be able to join us today along with Lord Julian Fellowes, and he was recovering following eye surgery, and advised to rest. We all send you our best wishes for a full recovery and a return to good health, enjoy an extra scotch sir.

Jon then started with a presentation on the whole build up procedure to construct the SWIB Garden, thanks to all, especially Terry with the wonderful vegetables that he grows, more difficult this year with the late show.

James Alexandra-Sinclair followed with his talk entitled "Dancing through Borders", I commented to him he should consider going on Strictly Come Dancing. His unique style of presenting meant he was dancing almost back and forth across the stage, which had the audience captivated. Well done James and thank you for coming.

After a nice lunch served at our tables to keep all safe, the afternoon session began. Slides were shown on a giant screen, and awards presented by the Mayor of Weston Super Mare and James Alexandra-Sinclair.

All in all a wonderful day.

Finally my grateful thanks to you all for making this possible, a day many thought may not happen for a while.

To my committee, judges, sponsors, and Weston s Mare council. Enjoy the Festive season and see you all in 2022

Vic Verrier MBE
President RHS South West in Bloom



Five tips for making 2022 blooming great

Amberol's managing director Patience Atkinson-Gregory offers her view on how SWIB groups can have a more successful 2022.

As 2021 draws to a close, it's time to look to the future. Everyone reading this newsletter will have had challenges to face during the last 18 months - both individually and within their community. As a planter and litter bin manufacturer working with Britain in Bloom groups across the South West and the UK, we have witnessed first-hand how hard you have all worked to maintain that sense of community through the hard work that you do.



And those challenges remain. As the long term economic impact of the pandemic begins to reveal itself, all consumers - from multinational businesses to voluntary gardening groups - need to prepare themselves for potential supply issues and a changing landscape in terms of restrictions.

Learning from the past

But two advantages that we have over 2020 are knowledge and forewarning. So what can In Bloomers do to subvert potential problems in 2022?

- 1 Planning will be key.** Many In Bloom groups that we know begin planning for the following year even before the previous summer draws to a close. These groups are now likely to have even more of an advantage over those who leave their planning a little later - especially in terms of sourcing materials from plants to planters. We are advising our customers to place their orders as soon as possible while the supply chain remains unpredictable for so many sectors, including manufacturers, garden centres and seed suppliers.

. 2

Shop around. Although inflation was holding steady at the time of writing, the consensus is that prices are likely to rise across a range of areas in 2022 from energy to raw materials. However, there are still good deals to be had, so it pays to shop around. For example, at Amberol, we are **holding our prices at 2020 levels until 31st December**, despite rising production costs. This means that those ordering before 2022 can make significant savings on large orders.

- 3 Invest in quality.** It's the age old dilemma for the consumer: do I buy cheap and cheerful to reduce costs in the short term or pay more initially and save money long term? We don't pretend that our self-watering planters are the cheapest on the market - but they are the originals, and in our opinion, the best. They certainly offer value for money in terms of durability and longevity. In fact, many customers report that their self-watering planters and litter bins last for two or more decades, making them a sound investment. Items such as Amberol's [Metre Square Planters](#) and [Barrier Baskets](#) are some of our earliest designs - and still going strong in many areas.



Joint Third - Gita Rae, Sidmouth